

The MK Link connection and distribution system brings plug-in convenience and versatility for lighting installations.

It is a modular plug and socket interface that provides electrical connection in one easy click-in action. Luminaires can be plugged in without circuit isolation. All live contacts are inaccessible and the earthing connection is made before any other.

- **Live contacts are inaccessible**
- **Earth Contact – first to make, last to break**
- **Mechanical and Electrical Connection in one 'click-in' action**
- **Strong load grips support up to 5kg**

3 Pin Accessories

3 PIN PLUGS 6 AMP



K3230 WHI



3 PIN SOCKETS 6 AMP



K3220 WHI



K3211 WHI



K3212 WHI

3 PIN CEILING ROSES 6 AMP



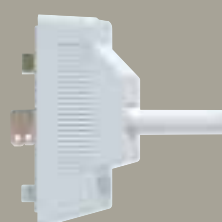
K3240 WHI



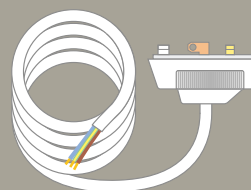
K3240 WHI

3 Pin Pre-wired

3 PIN PLUGS 6 AMP



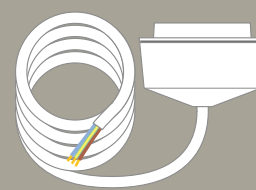
K3232 WHI



3 PIN CEILING ROSES 6 AMP



K3242 WHI



K3230 WHI
WHITE 3 PIN PLUG
WITH CORD GRIP

10

K3220 WHI
CIRCULAR (BESA)

10

K3211 WHI
ARCHITRAVE

10

K3212 WHI
ARCHITRAVE
WITH TRUNKING CLAMP

10

K3213 WHI
LOW PROFILE ARCHITRAVE

10

DIMENSIONS
57 x 25 x 25mm

TERMINALS
Phase, neutral and earth terminals
will each accept 1 x 0.75,
1 x 1.00mm² conductors.

NOTE
K3230 can be used with the 4 pin
socket outlets in this range.

WARNING
Plugs **must only** be wired to
loads, luminaires or appliances.
BS. 6972 & BS. 5733

DIMENSIONS
K3220: 74mm dia. & 7mm depth
K3211 & K3212:
86 x 33 x 6mm & 7mm depth
K3213:
86 x 36 x 1.5mm & 10mm depth
FIXING CENTRES
K3220: 50.8mm diagonal BESA
K3211, K3212 & K3213: 60.3mm
MOUNTING BOXES
K3220: Conduit BESA Egatube boxes
or surface K3202 WHI circular box
K3211, K3213: Surface K2151WHI or
flush dryline K3204 or flush solid
K3921 ZIC

TERMINALS
Phase, neutral, earth & 'loop in'
terminals will each accept
5 x 0.75, 5 x 1.00, 4 x 1.50, 3 x 2.50
or 2 x 4.00mm² conductors
NOTE: only 3 pin plugs can be used
with these sockets
BS.6972 & BS.5733

K3240 WHI
CEILING ROSE (BESA)
WITH 3 PIN PLUG

10

K3241 WHI
SURFACE MOUNTING
CEILING ROSE WITH 3 PIN PLUG

5

DIMENSIONS
K3240: 75mm dia. x 44mm & 7mm
fitting depth
K3241: 80mm dia. x 58mm surface
FIXING CENTRES
K3240: 50.8mm diagonal BESA
K3241: Slotted screw holes (No.8),
50.8mm centres, can be mounted on
a BESA box

MOUNTING BOXES
K3240: Conduit BESA Egatube boxes
or surface K3202 WHI circular box

TERMINALS
Phase, neutral, earth and 'loop in'
terminals will each accept 5 x 0.75,
5 x 1.00, 4 x 1.50, 3 x 2.50, or
2 x 4.00mm conductors
BS.6972 & BS.5733

K3232 WHI
3 PIN PLUG FITTED WITH
2M WHITE PVC FLEX

10

K3233 WHI
3 PIN PLUG FITTED WITH
3M WHITE PVC FLEX

5

K3232 WHI & K3233 WHI
incorporate K3230 WHI fitted with
the respective length of heat
resisting PVC insulated and
sheathed flexible 0.75mm three
core circular cable complying with
BS.6141

K3242 WHI
CEILING ROSE AND 3 PIN PLUG
FITTED WITH 2M PVC FLEX

10

K3243 WHI
CEILING ROSE AND 3 PIN PLUG
FITTED WITH 3M PVC FLEX

5

K3242 LSF
CEILING ROSE AND 3 PIN PLUG
FITTED WITH 2M LSF FLEX
(NON UK)

10

K3243 LSF
CEILING ROSE AND 3 PIN PLUG
FITTED WITH 3M LSF FLEX
(NON UK)

5

K3242 WHI & K3243 WHI
incorporate K3240 WHI fitted with
the respective length of heat
resisting PVC insulated and
sheathed flexible 0.75mm three
core circular cable complying with
BS.6141

K3242 LSF & K3243 LSF
incorporate K3240 WHI fitted with
the respective length of low smoke
zero halogen insulated and
sheathed flexible 0.75mm three
core circular cable to BS.6500
BS.6972 & BS.5733

GENERAL SPECIFICATION

Rated voltage for all plugs, sockets and pre-wired assemblies 250V 50Hz
Rated load current for all plugs, sockets and pre-wired assemblies 6 Amps
Static suspension load for plugs, sockets and pre-wired assemblies 5kg max.

4 Pin Accessories

4 PIN PLUGS
6 AMP

4 PIN SOCKETS
6 AMP

4 PIN CEILING ROSES
6 AMP

4 Pin Pre-wired

PREWIRED
4 PIN PLUGS
6 AMP

PREWIRED
4 PIN CEILING ROSES



K4230 RED



K4230 WHI



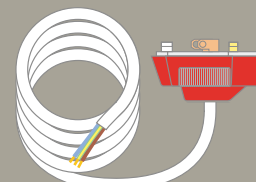
K4214 WHI



K4220 WHI



K4240 WHR



K4232 WHR



K4242 WHR



K4230 RED
RED 4 PIN PLUG WITH
CORD GRIP

10

K4230 WHI
WHITE 4 PIN PLUG WITH
CORD GRIP

10

K4214 WHI
ONE GANG 4 PIN SOCKET
OUTLET

10

K4220 WHI
CIRCULAR (BESA) 4 PIN
SOCKET OUTLET

10

K4240 WHR
CEILING ROSE (BESA) WITH
RED 4 PIN PLUG

10

K4232 WHR
RED 4 PIN PLUG WITH 2M
WHITE PVC FLEX.

10

K4233 WHR
RED 4 PIN PLUG WITH 3M
WHITE PVC FLEX

5

K4242 WHR
CEILING ROSE WITH RED
4 PIN PLUG AND 2M PVC FLEX

10

K4243 WHR
CEILING ROSE WITH RED
4 PIN PLUG AND 3M PVC FLEX

5

K4242 LSF
CEILING ROSE WITH RED
4 PIN PLUG AND 2M LSF FLEX
(NON UK)

10

K4243 LSF
CEILING ROSE WITH RED
4 PIN PLUG AND 3M LSF FLEX
(NON UK)

5

DIMENSIONS
57 x 35 x 44mm

TERMINALS
Phase neutral, earth and auxiliary
terminals will each accept
1 x 0.75, 1 x 1.00mm conductors

NOTE
K4230 cannot be used with the 3
pin socket outlets in this range

WARNING
Plugs must only be wired to loads,
luminaires or appliances

BS.6972 & BS.5733

DIMENSIONS
K4214: 86 x 86 x 9mm & 5mm depth
K4220: 74mm dia. & 7mm depth

FIXING CENTRES
K4214: 60.3mm
K4220: 50.8mm diagonal (BESA)

MOUNTING BOXES
K4214: Surface K2160 WHI,
flush dryline QFB/1 WHI or
flush solid 861 ZIC
K4220: Conduit BESA Eगतube boxes
or surface K3202 WHI circular box

TERMINALS
Phase, neutral, earth, auxiliary &
'loop in' terminals will each accept
5 x 0.75, 5 x 1.00, 4 x 1.50,
3 x 2.50 or 2 x 4.00mm conductors

NOTE: 3 and 4 pin plugs can be
used with the 4 pin socket outlets in
this range.
BS.6972 & BS.5733

DIMENSIONS
FIXING CENTRES
50.8mm diagonal (BESA)

MOUNTING BOXES
Conduit BESA Eगतube boxes or
surface K3202 WHI circular box

TERMINALS
Phase, neutral, earth, auxiliary &
'loop in' terminals will each accept
5 x 0.75, 5 x 1.00, 4 x 1.50,
3 x 2.50 or 2 x 4.00mm conductors
BS.6972 & BS.5733

GENERAL SPECIFICATION

Rated voltage for all plugs, sockets and pre-wired assemblies 250V 50Hz
Rated load current for all plugs, sockets and pre-wired assemblies 6 Amps
Static suspension load for plugs, sockets and pre-wired assemblies 5kg max.

K4232 WHR & K4233 WHR
incorporate K4230 RED fitted with
the respective length of heat
resisting PVC insulated and
sheathed flexible 0.75mm four core
circular cable complying with
BS.6141.

BS.6972 & BS.5733

K4242 WHR & K4243 WHR
incorporate K4240 WHR fitted with
the respective length of heat
resisting PVC insulated and
sheathed flexible 0.75mm four core
circular cable complying with
BS.6141.

K4242 LSF & K4243 LSF
incorporate K4240 WHR fitted with
the respective length of low smoke
zero halogen insulated and
sheathed flexible 0.75mm four core
circular cable to BS.6500
BS.6972 & BS.5733

Mounting Boxes

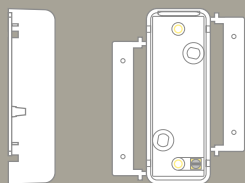
ARCHITRAVE
MOULDED
FLUSH

STEEL
FLUSH

SQUARE
MOULDED
FLUSH

STEEL
FLUSH

CIRCULAR
SURFACE



K3204 WHI

K2151 WHI



3921 ZIC

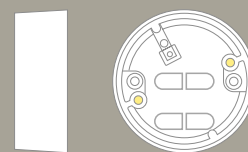


QFB/1 WHI

K2160 WHI



861 ZIC



K3202 WHI

2/ECR/1

2/ECR/3

K3204 WHI
1 GANG
ARCHITRAVE BOX

10

K2151 WHI
1 GANG
ARCHITRAVE BOX

10

3921 ZIC
1 GANG
ARCHITRAVE BOX

10

QFB/1 WHI
1 GANG
DRY LINING BOX

10

K2160 WHI
1 GANG 16MM
MOULDED BOX

10

861 ZIC
1 GANG
ONE ADJUSTABLE LUG

20

K3202 WHI
CIRCULAR SURFACE
MOUNTING BOX

10

2/ECR/13
20mm LOOP-IN

25

2/ECR/1
20mm BACK OUTLET

25

2/ECR/3
20mm TWO WAY

25

2/ECR/8
20mm TWO WAY AND
BACK OUTLET

10

K3204 WHI
DIMENSIONS:
80 x 29 x 20mm
FIXING CENTRES:
60.3mm vertical

K2151 WHI

Earth terminal fitted in base.

DIMENSIONS:
87 x 33 x 16mm
FIXING CENTRES:
60.3mm

BS.5733: 1995

With earth terminal
DIMENSIONS:
75 x 27 x 27mm
FIXING CENTRES:
60.3mm

KNOCKOUTS:
3 x 16mm
BS.4662: 1970

QFB/1

All round flange for flush fit. One piece moulded lug automatically snaps into place. No rear projections. Clamp device on cable entry. Will accommodate partition thicknesses between 6mm and 16mm. Earth terminal facility.
BS.4662: 1970 where applicable

K2160 WHI
Earth terminal fitted in base of boxes.

DIMENSIONS:
K2160: 87 x 87mm
FIXING CENTRES: 60.3mm
BS.5733: 1995

GENERAL SPECIFICATION

Rated voltage for all plugs, sockets and pre-wired assemblies 250V 50Hz
Rated load current for all plugs, sockets and pre-wired assemblies 6 Amps
Static suspension load for plugs, sockets and pre-wired assemblies 5kg max.

With earth terminal
DIMENSIONS:
75 x 75mm
FIXING CENTRES:
60.3mm

KNOCKOUTS:
12 x 20mm
BS.4662: 1970

K3202 WHI
DIMENSIONS: 85mm dia x 31mm
FIXING CENTRES: 50.8mm BESA

CONDUIT BOXES

20mm Loop-in boxes have 4 x 20mm knockouts on underside

MATERIAL: PVC-U

LID FIXING CENTRES:
50.8mm

PILLAR THREAD SIZE:
M4 (Brass inserts)

All boxes contain a moulded recess for earth terminal

See Pages 297-298 for the full selection of circular conduit boxes

Distribution Boxes



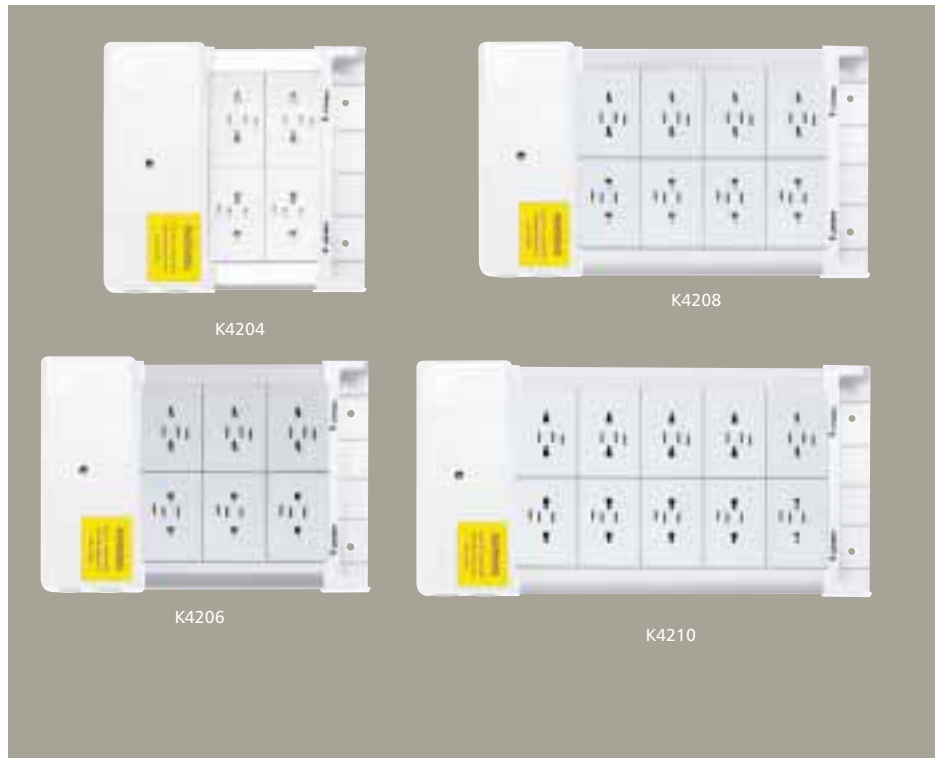
Fixing of the distribution box to lighting trunking is made easy through the choice of cable entry points.



The distribution box can be suspended on drop rods utilising Caddy Clips.*



The distribution box can be fitted directly to the wall or ceiling using the pilot holes provided in the base.



K4204
4 GANG 6 AMP
4 PIN SOCKET
LIGHTING DISTRIBUTION BOX

1

K4208
8 GANG 6 AMP
4 PIN SOCKET
LIGHTING DISTRIBUTION BOX

1

K4206
6 GANG 6 AMP
4 PIN SOCKET
LIGHTING DISTRIBUTION BOX

1

K4210
10 GANG 6 AMP
4 PIN SOCKET
LIGHTING DISTRIBUTION BOX

1

DIMENSIONS

K4204: 80 x 222 x 237mm
K4206: 80 x 222 x 335mm
K4208: 80 x 222 x 400mm
K4210: 80 x 222 x 465mm

MOUNTINGS

Provision for screw (No. 8) fix to walls or trunking and slots for *Caddy Clips on top, bottom and back faces.

Conduit entries with snap fit blanks; 20 & 25mm in top, bottom and back faces. Outlets can be wired as 1 or 2 banks.

TERMINAL CAPACITY;
3 x 6mm rated at 16 amps.
Each socket is rated at 6 amps.

Extruded aluminium body with VO rated plastic terminal housing. Both 3 & 4 pin plugs can be used with the distribution box 4 pin socket outlets.
BS.5733

*Caddy Clip is a registered trade mark of Erico Europa (UK) Ltd. Reading.

Presence Detector



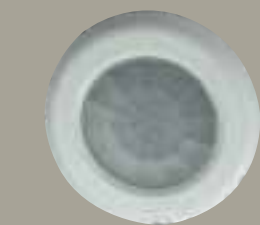
K4199 WHI



K4201 WHI



K4202 WHI



K4199 WHI

1

PRESENCE DETECTOR WITH
ADJUSTABLE DELAY TO OFF
AND LIGHT LEVEL
DETECTION

MOUNTINGS

K4199 is suitable for flush mounting in a suspended ceiling tile, maximum 54mm thick with a minimum of 125mm between the front surface of the tile and the hard ceiling behind. Mount in the centre of the group of luminaires to be controlled. Mounting hole 50mm diameter.

Supplied with 3M, 4 core 1.0mm LSF flex.

Sensor range 3M at 2.4M high
= 6M diameter.

Time out period 2 to 37 minutes –
factory set at 20 minutes.

Incorporates a light sensor to inhibit
switch ON and a timer for delay to
switch OFF. The timer and light
threshold calibration can be adjusted
with K4202 WHI hand held
programming control.

Switching capacity 6A for all
fluorescent loads.

Residual current consumption 30mA
at 240V.

All materials VO rated.

BS EN 60669-2-1.

K4201 WHI

1

REMOTE ON/OFF CONTROL
FOR PRESENCE DETECTOR
(K4199 WHI)

K4202 WHI

1

REMOTE PROGRAMMING
CONTROL FOR PRESENCE
DETECTOR (K4199 WHI)

K4201 provides manual ON & OFF
override switching control of K4200

K4202 is used to adjust the light
sensor and timer delay features of
K4200. Light sensor level can be
set between sensor lux and the
timer.