



The award winning Masterseal range has been specifically designed for use in either outdoors or indoors and in areas heavily exposed to dust and splashing water. In the garden, workshop, industry, or on farms, there are situations where a supply of electricity, although potentially dangerous, is essential. Scientifically sealed to IP56 and tested by MK well in excess of British Standards, it will protect you and your electrical supply in the unfriendliest of environments. Masterseal sockets are unique in that they can seal around virtually any standard 13 amp plug, allowing safe connection for any appliance.

Waterproof

Protection from strong jets of water from any direction, and protection from dust, sawdust and small particles

Robust construction

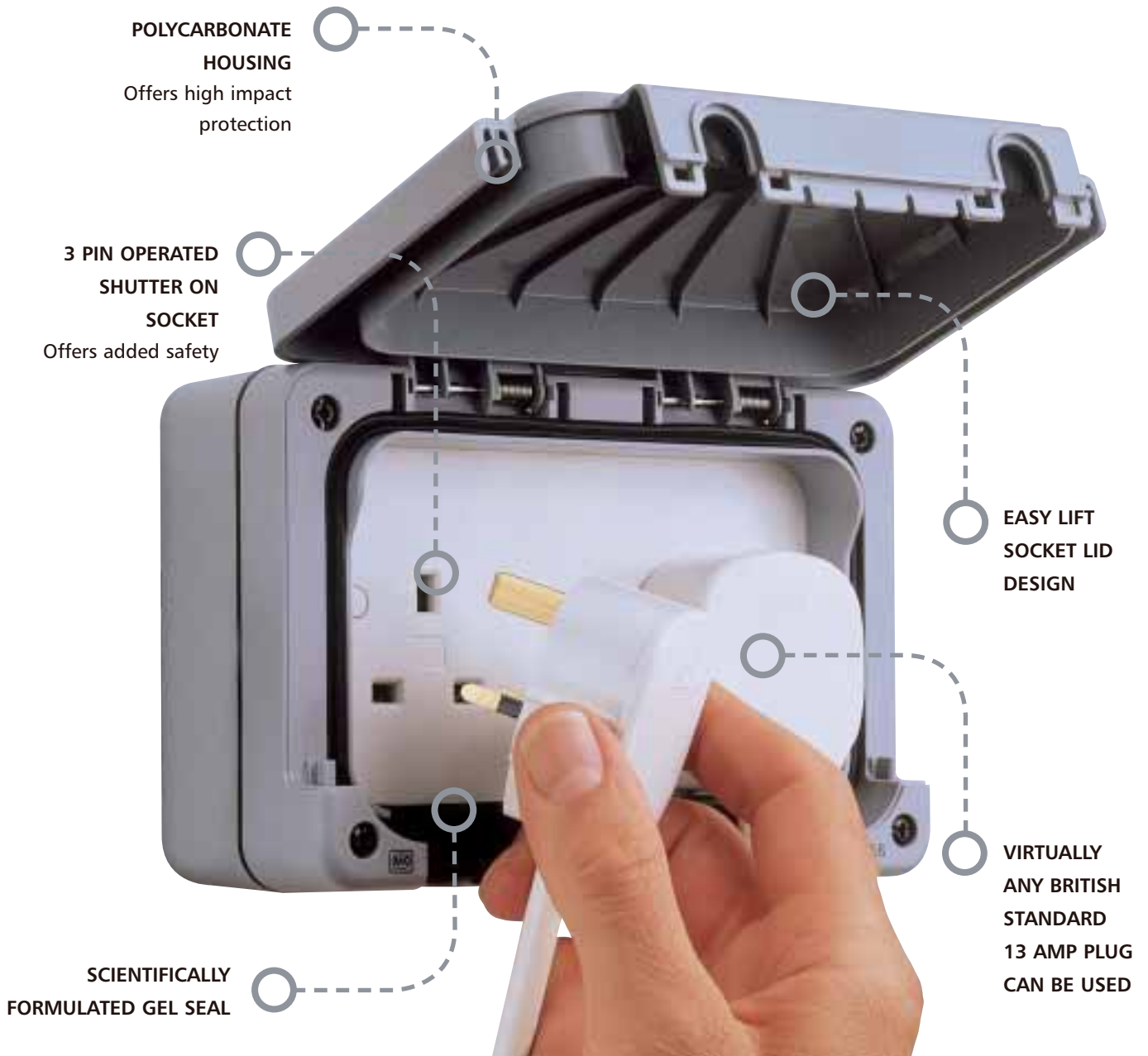
It will not discolour, crack or fade in UV light (unlike many other plastics)

Temperature tolerant

Will maintain operation in extremes of heat and cold

Impaction protection

The Masterseal range is made with polycarbonate, one of the toughest thermoplastics available today – so tough and durable that it's used in motorcycle helmets and car bumpers



Waterproof connection to safeguard home and family

Masterseal's unique design means socket outlets retain their IP56 rating when in use

WHY POLYCARBONATE?

The Masterseal range is made with Polycarbonate, one of the toughest thermoplastics available today – so tough and durable that it's used in motorcycle helmets and car bumpers. It will not discolour, crack or fade in UV light (unlike many other plastics), it has good resistance to most chemicals and will maintain its high resistance to impact in extremes of heat and cold.



Switch Socket Outlets and Timer Socket Outlet

13 AMP
IP56

RCD PROTECTED
13 AMP
IP56

Socket Outlets

13 AMP
IP56

16 AMP
IP56

Connection Unit

13 AMP
IP56



56482 GRY



56301 GRY



56480 WHI



56483 GRY



56410 GRY



56485 GRY



56231 GRY



56481 WHI



56483 WHI

56482 GRY**1****56482 WHI****1**

13 AMP DP
2 GANG
SWITCHED

56485 GRY**1****56485 WHI****1**

13 AMP SP
1 GANG
WITH ELECTRONIC TIMER MODULE

AVAILABLE APRIL 2004

Fixing holes are for No.8
woodscrews (not supplied).

Backbox has 5 cable entries, 2 on
top and 1 centrally on other 3
sides. Supplied with earth
terminals in backbox.

DIMENSIONS: 175 x 115 x 80mm

BS. 1363 Pt. 2: 1995

IP56 BS EN 60529: 1992

Timer Module meets the
requirements of IEC 60 730-1 and
IEC 60730-2-7 Standards

56301 GRY**1****56301 WHI****1**

1 GANG DP
30mA RATED TRIPPING
CURRENT
ACTIVE CONTROL CIRCUIT

56231 GRY**1****56231 WHI****1**

2 GANG DP
30mA RATED TRIPPING
CURRENT
ACTIVE CONTROL CIRCUIT

56233 GRY**1****56233 WHI****1**

2 GANG DP
30mA RATED TRIPPING
CURRENT
PASSIVE CONTROL CIRCUIT

RCD protected sockets are pulsating d.c.
and a.c. fault current sensitive.

Fixing holes are for No.8
woodscrews (not supplied).

Supplied with an earth terminal in the
back box. The Sentriesocket has 5 entries.
Suitable for supply voltage of 240V a.c.
50Hz

Rotary operated shutter.

DIMENSIONS: 175 x 115 x 80mm

BS.1363 Pt.2: 1995. BS.7288: 1990

IP56 BS EN 60529: 1992

IMPORTANT: For explanation of active and
passive control circuit please see page 229
under Sentriesocket heading

56480 GRY**1****56480 WHI****1**

13 AMP
1 GANG
UNSWITCHED

56481 GRY**1****56481 WHI****1**

13 AMP
2 GANG
UNSWITCHED

Fixing holes are for No.8
woodscrews (not supplied).

56480 has 4 x 20mm entries,
1 on top, bottom and each side
and is supplied with an earth
terminal in the back box.

56481 has 5 entries.

DIMENSIONS:
1 gang: 95 x 95 x 80mm
2 gang: 175 x 115 x 80mm

BS.1363 Pt.2: 1995

IP56 BS EN 60529: 1992

56483 GRY**1****56483 WHI****1**

16 AMP
1 GANG
2P+E
UNSWITCHED
(NON UK)

Fixing holes are for No.8
woodscrews (not supplied).

56483 is for use with plugs
having right angled cable exit. It
cannot be used with rear entry box
(56504).

DIMENSIONS:
95 x 95 x 80mm

IEC 60884-1: 2002

EDIN VDE 0624-1:1999-09

56410 GRY**1****56410 WHI****1**

13 AMP DP
1 GANG
SWITCHED, FUSED

Fitted with a 13A fuse link to
BS.1362.

Fixing holes are for No.8
woodscrews (not supplied)
Backbox has 4 x 20mm entries, 1
on each edge, and is supplied with
an earth terminal in the backbox.

DIMENSIONS: 95 x 95 x 80mm

BS.1363 Pt.4:1995

IP56 BS EN 60529: 1992

Masterseal enclosures are manufactured from polycarbonate. This provides an extremely high level of impact resistance. However some chemicals and synthetic oils can harm polycarbonate.

Refer to Technical Hotline for assistance +44 (0) 1268 563720

Switches

10 AMP
IP56

10 AMP
IP56

10 AMP
IP56

20 AMP
IP56

SECRET KEY
20 AMP
IP56



56400 GRY



56400 WHI



56401 GRY



56401 WHI



56402 GRY



56402 WHI



56406 GRY



56406 WHI



56407 GRY



56408 GRY



56408 WHI



56409 GRY



56411 GRY



56413 GRY



56414 GRY

56400 GRY
56400 WHI
10 AMP 1 GANG
SP ONE-WAY

1
1

56401 GRY
56401 WHI
10 AMP 1 GANG
SP TWO-WAY

1
1

56402 GRY
56402 WHI
10 AMP 2 GANG
SP ONE-WAY

1
1

56406 GRY
56406 WHI
10 AMP 1 GANG
DP ONE-WAY

1
1

56407 GRY
56407 WHI
10 AMP 1 GANG
SP TWO-WAY
PUSH TO MAKE OR
PUSH TO BREAK
'BELL'

1
1

56408 GRY
56408 WHI
10 AMP 1 GANG
SP TWO-WAY
PUSH TO MAKE OR
PUSH TO BREAK
'PRESS'

1
1

56409 GRY
20 AMP 1 GANG
DP ONE-WAY
'PRESS'

1

56411 GRY
56411 WHI
20 AMP 1 GANG
SP TWO-WAY
SECRET KEY SWITCH
MARKED 'EMG LTG TEST'

1
1

56412 GRY
56412 WHI
20 AMP 1 GANG
DP ONE-WAY
SECRET KEY SWITCH

1
1

56413 GRY
56413 WHI
20 AMP
SP TWO-WAY SWITCH +
20 AMP 2 WAY
SECRET KEY SWITCH

1
1

56414 GRY
56414 WHI
2 GANG MODULAR GRID PLUS
ENCLOSURE* **AVAILABLE JUNE 2004**

1
1

Fixing holes are for No:8 woodscrews (not supplied).

Each switch is fitted with a neon which can be wired as a locator.

The enclosure has 4 x 20mm entries, 1 on top, bottom and each side and is supplied with an earth terminal and a loop terminal in the back box.

These switches (except push switches) do NOT have to be derated when used with fluorescent or inductive loads.

DIMENSIONS:
95 x 95 x 57mm

BS EN 60669: 2000

IP56 to BS EN 60529: 1992

VDE 0632-1A

Fixing holes are for No:8 woodscrews (not supplied).

Each switch is fitted with a neon which can be wired as a locator.

The enclosure has 4 x 20mm entries, 1 on top, bottom and each side and is supplied with an earth terminal and a loop terminal in the back box.

These switches (except push switches) do NOT have to be derated when used with fluorescent or inductive loads.

DIMENSIONS:
95 x 95 x 57mm

BS EN 60669: 2000

IP56 to BS EN 60529: 1992

VDE 0632-1A

BS EN 60669-1:2000

IP56 to BS EN 60529: 1992

VDE 0632-1A

BS EN 60669-1:2000

IP56 to BS EN 60529: 1992

VDE 0632-1A

Fixing holes are for No:8 woodscrews (not supplied). Backbox has 4 x 20mm entries, 1 on top, bottom and each side. Supplied with an earth terminal and a loop terminal in the backbox.

DIMENSIONS: 95 x 95 x 80mm
BS EN 60669: 2000

IP56 to BS EN 60529: 1992

* NOTE: Installers may select any switch or neon modules, excluding dimmers, from Grid Plus range and configure product to suit installation requirements.

Switch Enclosures

Switch Modules

Neon Modules

Photo Electric (Dusk/Dawn)

IP56

10 AMP

20 AMP

IP56



56420 GRY



56421 WHI



56422 GRY



56422 WHI



56881 BLK



56882 BLK



56883 BLK



56891 BLK



56892 BLK



56893 BLK



56896 BLK



56889 RED



56748 GRY

56420 GRY
56420 WHI
1 GANG FOR USE WITH ANY ONE SWITCH MODULE

1
1

56421 GRY
56421 WHI
1 GANG WITH NEON FOR USE WITH ANY SWITCH AND ANY NEON MODULE

1
1

56422 GRY
56422 WHI
2 GANG FOR USE WITH ANY TWO SWITCH MODULES

1
1

Fixing holes are for No.8 woodscrews (not supplied).

Each enclosure is fitted with a neon which should be wired as a locator.

The enclosure has 4 x 20mm entries, 1 on top, bottom and each side and is supplied with an earth terminal and a loop terminal in the back box.

NOTE: These enclosures are for use with the Masterseal switch and neon modules.

DIMENSIONS:
95 x 95 x 57mm

IP56 to BS EN 60529: 1992

56881 BLK
10 AMP SP ONE-WAY

10

56882 BLK
10 AMP SP TWO-WAY

10

56883 BLK
10 AMP DP ONE-WAY

10

For use only with Masterseal switch enclosures.

These switches do NOT have to be derated when used with fluorescent or inductive loads.

BS EN 60669-1: 2000

56891 BLK
20 AMP SP ONE-WAY

10

56892 BLK
20 AMP SP TWO-WAY

10

56893 BLK
20 AMP INTERMEDIATE

10

56896 BLK
20 AMP DP ONE-WAY

10

For use only with Masterseal switch enclosures.

These switches do NOT have to be derated when used with fluorescent or inductive loads.

BS EN 60669-1: 2000

56889 RED
200-250V NEON RED

10

BS.5733: 1995

56748 GRY
AUTOMATIC SWITCH WITH FIXED AMBIENT LIGHT THRESHOLDS AND OPTIONAL ADJUSTABLE TIMER

1

Masterseal photo electric switch will automatically switch on at dusk and off at dawn. Alternatively, an optional user adjustable time period can be used to switch the load OFF before dawn, if required. Suitable for supply voltage of 230V a.c. 50Hz

DIMENSIONS: 95 x 95 x 65mm

NOMINAL LIGHT LEVEL

THRESHOLDS:

25 lux ON, 40 lux OFF
Optional timer adjustable from 1-15 hours (nominal)

RATING: single pole 6 amp resistive
1000W Tungsten GLS
1000W Tungsten Halogen
1200W Fluorescent (without PF correction).
100 μ f max. load capacitance.

IEC 60669-2-1
IP56 to BS EN.60529: 1992
BS EN.50081-1 BS EN.50082-1

This product is not suitable for use with low energy, compact, Fluorescent lamps.

Data/Telecom
Enclosure
Euro Format

Euro Data
Modules

Junction
Box

IP56

TELECOM

DATA

ISDN

IP56



56423 GRY



K5820 WHI



K5820 BLK



K5821 WHI



K5821 BLK



K5844 WHI



K5887 WHI



K5887 BLK



K5840 WHI



K5840 BLK



56506 GRY



56506 WHI



56423 GRY

56423 WHI

1 GANG
DATA ENCLOSURE
FOR ONE MODULE EURO OUTLET
SUPPLIED WITH
2 X HALF MODULE BLANKS

1

1

K5820 WHI

K5820 BLK

BT MASTER
ONE MODULE

K5821 WHI

K5821 BLK

BT SECONDARY
ONE MODULE

5

5

5

5

K5844 WHI

RJ45 CAT 5E
ANGLED UNSCREENED
ONE MODULE

K5887 WHI

K5887 BLK

RJ11/12
ONE MODULE

5

5

5

5

K5840 WHI

K5840 BLK

ISDN
ONE MODULE

5

5

56506 GRY

56506 WHI

JUNCTION BOX
WITH FOUR
4-WAY TERMINALS

1

1

2 data modules can be accommodated providing care is used to ensure that the cables are correctly routed through the outlet.

Fixing holes are for No.8 woodscrews (not supplied). Backbox has 4 x 20mm entries, 1 on each edge. Supplied with an earth terminal and a loop terminal in the backbox.

DIMENSIONS: 95 x 95 x 80mm
IP56 to BS EN.60529: 1992

DIMENSIONS:
25 x 50mm
BS.6312 Pt2

K5844
Enhanced Cat 5 performance. Suitable for both 568A and 568B wiring schemes. Supplied with cable tie and cable anchors to secure wires in the connectors.
TIA/EIA TSB40A: Cat 5e
TIA/EIA 568-A: Cat 5e
ISO/IEC11801: Cat 5e

K5887
Suitable for both RJ11 and RJ12 jacks
RJ11: 4 wire
RJ12: 6 wire
FCC68

DIMENSIONS:
25 x 50mm

Incorporates line terminating resistor.

DIMENSIONS:
25 x 50mm
TIA/EIA TSB40A
TIA/EIA 568-A
ISO/IEC11801

Fixing holes are for No. 8 woodscrews (not supplied).

The enclosure has 4 entries, 1 on top, bottom and both sides.

TERMINAL CAPACITY:
Each terminal block accepts four 2.5mm² cables.

DIMENSIONS:
95 x 95 x 65mm
BS.6220:1983
IP56 to BS EN.60529

Modular TV/Satellite outlets are also available to fit Euro frontplates. See page 31 for details

Rear Entry Back Boxes

Flush Mounting Frames

Flush Mounting Bezels

Conduit Entries

Accessories



56504 GRY



56505 GRY



56500 GRY



56500 WHI



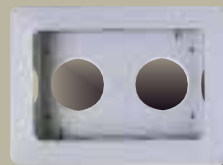
56501 GRY



56502 GRY



56502 WHI



56503 GRY



56460 WHI



56461 WHI



56462 WHI



56463 WHI



56464 WHI



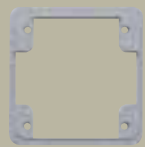
56837



9933



56890 GRN



K9944

56504 GRY
56504 WHI
1 GANG BOX
REAR CONDUIT ENTRY

1
1

56505 GRY
56505 WHI
2 GANG BOX
REAR CONDUIT ENTRY

1
1

56500 GRY
56500 WHI
1 GANG
PLASTER/TILE
FLUSH MOUNTING FRAME
WITH PROTECTIVE COVER

1
1

56501 GRY
56501 WHI
2 GANG
PLASTER/TILE
FLUSH MOUNTING FRAME
WITH PROTECTIVE COVER

1
1

56502 GRY
56502 WHI
1 GANG
FLUSH MOUNTING BEZEL
FOR USE WITH 56504

1
1

56503 GRY
56503 WHI
2 GANG
FLUSH MOUNTING BEZEL
FOR USE WITH 56505

1
1

56460 GRY
56460 WHI
ENTRY BLANK

5
5

56461 BLK
56461 WHI
PVC CABLE ENTRY
TO PROVIDE DIRECT
ENTRY OF POWER CABLE
TO THE UNIT VIA THE
BOTTOM BOX ENTRY

5
5

56462 BLK
56462 WHI
20MM PLAIN CONDUIT
ENTRY PUSH FIT ADAPTOR
BETWEEN BACK BOX AND
20MM PLAIN CONDUIT

5
5

56463 BLK
56463 WHI
20MM THREADED
CONDUIT ENTRY PUSH FIT
ADAPTOR BETWEEN
BACK BOX AND 20MM
THREADED CONDUIT

5
5

56464 GRY
56464 WHI
BOX COUPLER
FOR GANGING ONE
MASTERSEAL BOX
NEXT TO ANOTHER

5
5

56837 BLK
REPLACEMENT GEL SEAL
FOR SOCKETS

5

9933
M20 EARTH LEAD
ADAPTOR FOR EARTHING
METAL CONDUIT

1

56890 GRN
REPLACEMENT
NEON LOCATOR

5

K9944
FLANGE FOR
PANEL MOUNTING
1 GANG
MASTERSEAL PRODUCTS

5

For use in rear entry surface mounted situations or for use in conjunction with Flush Mounting Bezels (56502 and 56503).

These products must be used if the cable or conduit enters the Masterseal enclosure from the rear. See pages TD233-234 for installation options.

Fixing holes are for No. 8 woodscrews (not supplied).

NOTE:

1 gang has no side entries.
2 gang has side entries fixed permanently in position.

Earth and loop terminals are provided but not fitted. Supplied with one PVC cable entry List No.56462.

DIMENSIONS:

1 gang: 95 x 95 x 40mm
2 gang: 175 x 115 x 40mm

The Flush adaptors for plaster and tile can be used with finish depths up to 20mm, by using the spacers provided. Allows flush mounted Masterseal products to maintain their IP rating.

Can be used with side entry or back entry enclosures. See pages TD233-234 for installation options.

DIMENSIONS:

1 gang: 115 x 115 x 34mm
2 gang: 135 x 195 x 34mm

The Flush adaptors for brick and cavity walls should be used on vertical surfaces where no additional finishing, such as plastering is required.

Allows flush mounted Masterseal products to maintain their IP rating.

Can only be used with back entry enclosures. See pages TD233-TD234 for installation options.

Supplied with 4 self tapping screws to fix enclosure to mounting bezel.

Clip-on surround hides mounting screws.

DIMENSIONS:

1 gang: 145 x 145 x 41mm
2 gang: 165 x 225 x 41mm

TECHNICAL HOTLINE +44 (0)1268 563720

Botanical Gardens, Wales



National Botanical Garden of Wales features, as its centrepiece, a real span development. The great glasshouse, the largest of its kind, designed by Norman Foster and Partners, has been nominated for the Stirling Prize building of the year.

The glazing is supported by a complex custom designed aluminium system of glass support. MK's electrical accessories were used throughout the structure complementing not only the design but also the climatic needs of the glasshouse.

The design and construction of the glasshouse required an unprecedented level of co-operation between the architects, engineers and building contractors with regard to knowledge of materials and construction techniques. The project also required an unconventional approach to the generation of instructions for the manufacturers and craftsmen who would make the buildings components. In addition to conventional architectural drawings, a three-dimensional computer model generated by a mathematical database was used. Foster and Partners had already gained some expertise in toroidal geometries from the concrete roof structure of the American Air Museum at Duxford, Cambs.

Architect Norman Foster & Partners

Structural Engineer Anthony Hunt & Associates

Contractor Schal International