

A woman with blonde hair in a bun, wearing a pink towel, stands in a shower with water droplets on the glass door.

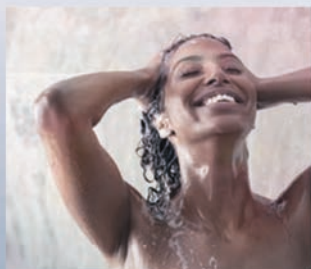
Designed for modern living

START YOUR LUXURY
WATER JOURNEY TODAY



BWT Perla Silk Enjoy - Protect - Save

SILKY, SOFT LUXURY WATER, THE PERFECT LIFESTYLE CHOICE



REVITALISING SHOWERS
& LUXURY BATHING



SPARKLING KITCHENS
& BATHROOMS



SOFTER SKIN &
SHINIER HAIR



SOFTER CLOTHES &
FLUFFIER TOWELS

Automatic & intelligent regeneration
for uninterrupted softened water supply

Data protection

Memory function stores data in the event
of a power cut

Multifunction back-lit display
with capacity indicator

'Rotary' valve for reliability

Blending valve to help you set the
perfect water hardness

Easy lift lid for easy loading of salt
blocks or cubes

Proportional brining only regenerates
the capacity used to save water & salt

Premium 'monospheric' resin for
maximum softening efficiency

Brine safety valve for added protection

Stylish design and impressive
performance perfect for today's
busy lifestyles



* Batteries not supplied
** Please contact us for more details

SIMPLY SET THE TIME, WATER HARDNESS
AND SALT TYPE AND YOU ARE READY TO
GO...

...THEN SIMPLY BOOK YOUR FULLY
INCLUSIVE FREE@HOME COMMISSIONING
VISIT WITH YOUR BWT ENGINEER.



**Uniconnect block and
high flow hoses** – offers
simple installation, bypass
operation and maintains
earth bonding



**Mains or domestic battery
supply:** Independent
battery operation for up
to 3 months, when mains
supply is not available
(Not suitable for Wi-Fi
models) *



BWT Wi-Fi: Take control
and stay connected when
you select Perla Silk Wi-Fi
models



Rechargeable Power Bank:
will provide 3-6 months
of softener use (Optional
Extra)**



BWT UPS: Additional
protection against power
cuts and unstable power
supplies, with built in
lithium ion battery
(Optional Extra)**



**Tested and fully
compliant: with EN4743**

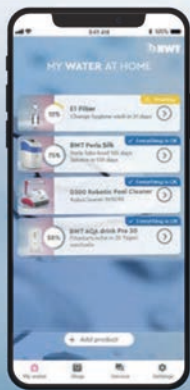


MORE WARRANTY LESS MAINTENANCE

The BWT Perla Silk is supplied with our Peace of Mind 5 year parts and 2 year labour @home warranty. Upgrade Options:

1. A full 6 years @ Home parts and labour warranty.
2. The Perla Silk full service package which includes the full 6 years @Home warranty as well as the benefit of 2 service visits (normally around the 2nd and 4th anniversary of installation.) Both available from our own Customer Service team at any time within 60 days of installation.

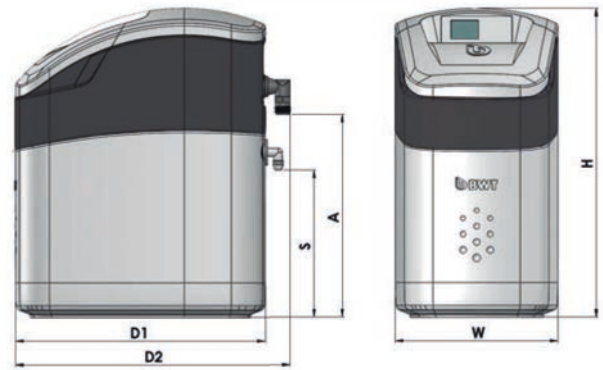
BWT Best Water Home



...is more than the free App for your BWT Perla Silk. It's your entry into the new era of customer satisfaction, your personal water consultant for countless BWT products and brings added value in terms of information, safety and comfort and a whole world of advantages await you.



BWT Best Water Home



BWT Perla Silk
the right choice

BWT PERLA - SILK	MODEL	S	M	L	XL
STANDARD AND WI-FI ENABLED MODELS	Y/N	Y	Y	Y	Y
FAMILY SIZE - Based on average usage at 300ppm		Up to 4 People	Up to 6 People	Up to 8 People	Up to 10 People
NOMINAL CONNECTION OUTSIDE THREAD	BSP	3/4" DN 20	3/4" DN 20	3/4" DN 20	3/4" DN 20
NOMINAL FLOW RATE **	l/h	1440	1560	1680	1680
OPERATING FLOW RATES	l/m	5/50	5/50	5/50	5/50
MAXIMUM FLOW RATES (STRAIGHT CONNECTORS)	l/m	80	80	80	80
OPERATING PRESSURE UK MIN/MAX	BAR	1.7 / 5.0	1.7 / 5.0	1.7 / 5.0	1.7 / 5.0
PRESSURE DROP DOWN AT NOMINAL FLOW **	BAR	1.0	1.0	1.0	1.0
EXCEEDS EFFICIENCY RATING**	Y/N	Y	Y	Y	Y
BLOCK AND TABLET SALT COMPATIBLE	TYPE	Y	Y	Tablet	Tablet
CAPACITY SALT RESERVOIR	kg	12	16	24	24
WATER TEMPERATURE MIN/MAX	°C	5/30	5/30	5/30	5/30
AMBIENT TEMPERATURE MIN/MAX	°C	5/40	5/40	5/40	5/40
ELECTRICAL CONNECTION (PLUG TRANSFORMER)	V/DC	230/12	230/12	230/12	230/12
HIGH FLOW HOSES, EASY FIT UNICONNECT CONNECTOR & FITTINGS INCLUDED	Y/N	Y	Y	Y	Y
DIMENSIONS: W X D2 X H	mm	276 X 470 X 526	276 X 470 X 596	276 X 470 X 803	276 X 470 X 803
CONNECTION HEIGHT (A) / OVERFLOW HEIGHT (S)	mm	345/250	415/320	622/527	622/527
OPERATING WEIGHT, APPROX.	kg	40	50	65	70

WHERE TO INSTALL

BWT Perla Silk should be installed on your domestic water inlet directly downstream from the water meter and any protective water filter. Generally fitted under or near a kitchen sink the chosen location will also need to be close to; a waste water pipe, an outside wall suitable for an overflow pipe and an electrical socket.

Silky soft Luxury Water protects your bathrooms and kitchen from the damaging effects of limescale. Ceramics, sanitaryware, shower screens and taps all benefit from its softer touch, helping them to stay looking like new for longer. Appliances benefit too, with no scale to zap the energy from vulnerable heating elements, items like washing machines and dishwashers not only work more efficiently but could last longer as well.

** In accordance with EN14743





BWT UK Limited

BWT House, The Gateway Centre,
Coronation Road, High Wycombe,
Buckinghamshire, HP12 3SU

☎ +44 1494 838100 🖨 +44 1494 838101

✉ enquiries@bwt-uk.co.uk

bwt.com

FOR YOU AND PLANET BLUE.